



## Luca SIGNOR

2084 route de Corps, Les Achards – Cordéac  
38710 Châtel-en-Trièves  
E-mail : [contact@casadesachards.fr](mailto:contact@casadesachards.fr)  
[www.casadesachards.fr](http://www.casadesachards.fr)

## DESCRIPTION OF THE GÎTE

In the heart of the French Alps (Trièves), halfway between Grenoble and Gap, close to the Matheysine, the Dévoluy and the Champsaur, La Casa des Achards welcomes you in a mountain hamlet, at 920 m altitude, at the foot of the Obiou mountain.

The house, an 18th century Dauphinois style farmhouse, was carefully restored in 2021 with respect for the environment (natural materials, wood heating, phyto-treatment, rainwater recovery).

The gîte has a fully equipped kitchen, a living room and 3 independent bedrooms, each with its own shower room. private bathroom.

You will discover the beauty of the mountains and the advantages of a preserved natural environment in this place that is conducive to rest and relaxation, combining comfort and tranquillity.

### Key figures

**Surface area of the gîte** : 80 m<sup>2</sup>, **capacity** : 8 people, number of living rooms: 4 (1 living room-kitchen-dining room, 3 bedrooms and 3 bathrooms)

Central heating: heating and hot water are provided by a wood pellet boiler. The gîte is non-smoking, animals are not allowed.

**Opening period** : all year round.

### Access

From Grenoble direction Gap by N85, 1 km after La Mure take the D526 direction Mens - pont de Ponnonnas; then take the D227, just after the pont de Ponnonnas follow the direction Châtel-en Trièves.

### Nearby

Shops-market : 12 km, café-grocery : 7 km, bar-restaurant : 11 km, swimming-water activities : 10 km, summer swimming pool : 12 km, indoor swimming pool : 18 km, horse riding : 3 km, hiking : on the spot, alpine skiing-nordic skiing-snowshoeing : 28 km, train station : 27 km

### Equipment and details of the rooms

**Living room-kitchen** (ground floor, surface 35 m<sup>2</sup>)

Fully equipped kitchen (electric oven, ceramic hob, extractor fan, fridge, washing machine, dishwasher, kettle, toaster), dining table with 8 chairs, double sofa bed.

**Fraxinus room** (ground floor, surface 16 m<sup>2</sup>)

1 double bed (160x200) separable into two single beds, 2 bedside tables, storage space (shelves, wardrobe, drawers), private bathroom (washbasin, shower, toilet, towel dryer).

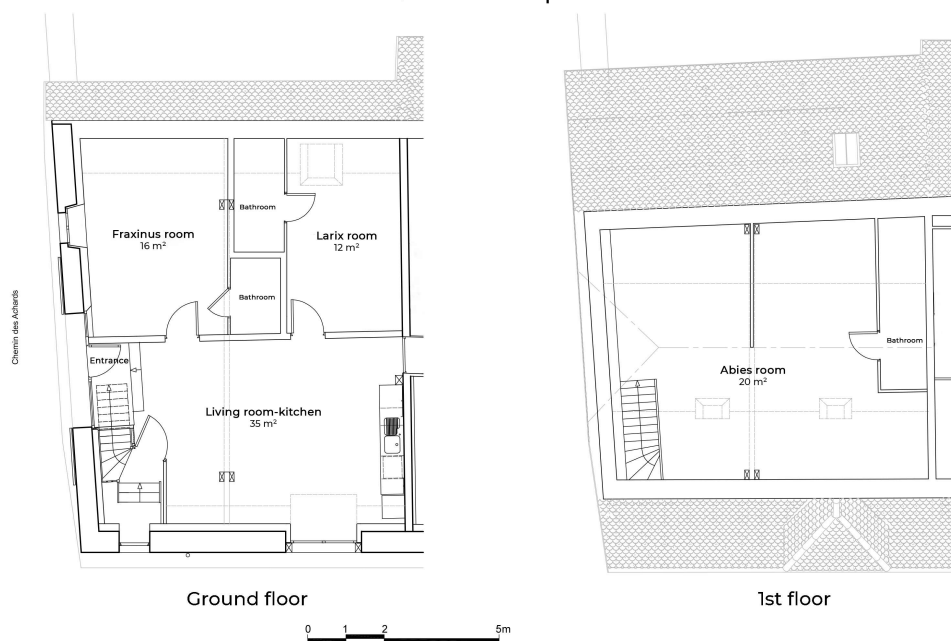
**Larix room** (ground floor, surface area 12 m<sup>2</sup>)

1 double bed (160x200) separable into two single beds, 2 bedside tables, storage space (shelves, wardrobe, drawers), private bathroom (washbasin, shower, toilet, towel dryer).

**Abies room** (1st floor, under the roof, surface area 20 m<sup>2</sup>)

1 double bed (160x200) separable into two single beds, 2 bedside tables, 1 double bed (80x190), storage space (shelves, wardrobe, drawers), private shower room (washbasin, shower, toilet, towel dryer).

## Cîte - Interior plan



### Services

The rental price **includes** :

- charges for water and heating consumption
- charges related to electricity consumption up to 8 kWh per day/per person
- internet access (secure wifi connection)
- the supply of blankets, duvets and pillows, as well as mattress and pillow protectors
- dishwashing and cleaning products
- a baby bed and a baby chair are provided free of charge, on request

The rental price **does not include** :

- bed linen (fitted sheets, duvet covers or sheets, pillow cases)
- bathroom and kitchen linen, which can be rented as an option
- toiletries (soap, shampoo)
- end-of-stay cleaning which can be chosen as an option

### Additional charges

These are the charges not included in the rental price :

- Tourist tax: 0.80 € per night and per person
- Electricity : kWh consumed beyond the fixed rate of 8 kWh per day/per person must be paid by the tenant at the end of the stay (price per additional kWh according to the current rate). A record of the electricity consumption will be taken from the meter at the beginning and end of the stay.

### Optional services

- |   |                 |
|---|-----------------|
| • end-of-stay cleaning (2 to 4 persons):                          | 60 €            |
| • end-of-stay cleaning (5 to 8 persons):                          | 80 €            |
| • bed linen (fitted sheets, duvet covers or sheets, pillow cases) | 14 € per person |
| • bathroom linen (1 large towel, 1 small towel, 1 bath mat)       | 10 € per person |

## Instructions for cleaning the gîte at the end of your stay

If you do not choose the end-of-stay cleaning option, we would like to remind you that the gîte must be meticulously cleaned by you before you leave and that the accommodation must be returned in the same state as it was when you arrived (see article 8 of the general terms and conditions of sale).

Vacuum all floors (living room, kitchen, bedrooms, bathrooms, internal staircase).

- **Floors** : the floors in the kitchen, living room, entrance hall (glazed parquet) and bathrooms (cork) should be cleaned with a well wrung out damp mop.

**Bedroom floors (oiled parquet) should only be vacuumed and not washed.**

- **Kitchen** : cleaning of work surfaces, fridge, oven, hob, kitchen equipment (clean and tidy), bins.

- **Bathrooms** : cleaning of washbasin, shower cubicle (tiles and glass doors), mirror.

- **Toilets** : cleaning the bowl, inside with the brush and under the toilet as well as the seat.

Empty small bathroom bins if used.

- **Bedding** : duvet covers must be stored folded on each bed, used blankets must be stored folded in the wardrobes. If bed linen and/or bath towels are rented, on the day of your departure please undo the beds and leave the sheets (and/or towels) folded in each room.

- **Precaution for the toilet** : please do not throw wipes or other material into the bowl, only toilet paper, as the gîte is equipped with a phytodepuration system.

- **Waste** : we ask you to separate your waste, you have three bins available under the kitchen sink

  - un **bac vert** for all biodegradable vegetable waste

(there is a compost bin in the garden where you can put this waste)

  - a **grey bin** for paper, plastic and metal

  - a **bin with a black bag** for non-recyclable waste

During your stay and on the day of your departure, it is your responsibility to take your rubbish with you and dispose of it in the bins provided (they are located in Cordéac next to the church and on the D66 road towards Mens).