



Luca SIGNOR

2084 route de Corps, Les Achards – Cordéac

38710 Châtel-en-Trièves

E-mail : contact@casadesachards.fr

DESCRIPTION OF THE GÎTE

In the heart of the French Alps (Trièves), halfway between Grenoble and Gap, close to the Matheysine, the Dévoluy and the Champsaur, La Casa des Achards welcomes you in a mountain hamlet, at 920 m altitude, at the foot of the Obiou mountain.

The house, an 18th century Dauphinois style farmhouse, was carefully restored in 2021 with respect for the environment (natural materials, wood heating, phyto-treatment, rainwater recovery).

The gîte has a fully equipped kitchen, a living room and 3 independent bedrooms, each with its own shower room. private bathroom.

You will discover the beauty of the mountains and the advantages of a preserved natural environment in this place that is conducive to rest and relaxation, combining comfort and tranquillity.

Key figures

Surface area of the gîte : 80 m², **capacity** : 8 people, number of living rooms: 4 (1 living room-kitchen-dining room, 3 bedrooms and 3 bathrooms)

Central heating: heating and hot water are provided by a wood pellet boiler. The gîte is non-smoking, animals are not allowed.

Opening period : all year round.

Access

From Grenoble direction Gap by N85, 1 km after La Mure take the D526 direction Mens - pont de Ponnassas; then take the D227, just after the pont de Ponnassas follow the direction Châtel-en Trièves.

Nearby

Shops-market : 12 km, café-grocery : 7 km, bar-restaurant : 11 km, swimming-water activities : 10 km, summer swimming pool : 12 km, indoor swimming pool : 18 km, horse riding : 3 km, hiking : on the spot, alpine skiing-nordic skiing-snowshoeing : 28 km, train station : 27 km

Equipment and details of the rooms

Living room-kitchen (ground floor, surface 35 m²)

Fully equipped kitchen (electric oven, ceramic hob, extractor fan, fridge, washing machine, dishwasher, kettle, toaster), dining table with 8 chairs, double sofa bed.

Fraxinus room (ground floor, surface 16 m²)

1 double bed (160x200) separable into two single beds, 2 bedside tables, storage space (shelves, wardrobe, drawers), private bathroom (washbasin, shower, toilet, towel dryer).

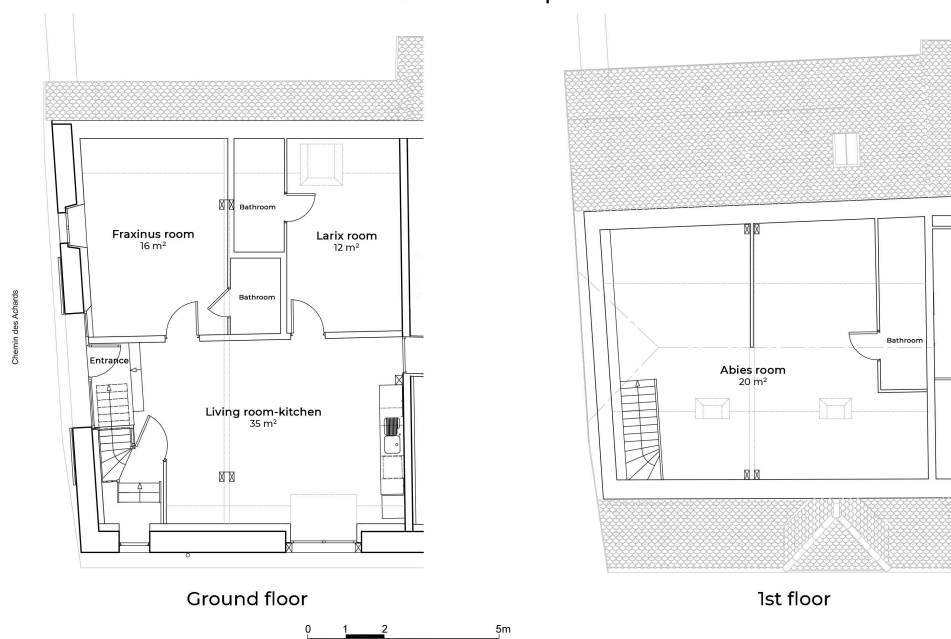
Larix room (ground floor, surface area 12 m²)

1 double bed (160x200) separable into two single beds, 2 bedside tables, storage space (shelves, wardrobe, drawers), private bathroom (washbasin, shower, toilet, towel dryer).

Abies room (1st floor, under the roof, surface area 20 m²)

1 double bed (160x200) separable into two single beds, 2 bedside tables, 1 double bed (80x190), storage space (shelves, wardrobe, drawers), private shower room (washbasin, shower, toilet, towel dryer).

Cîte - Interior plan



Services

The rental price **includes** :

- charges for water and heating consumption
- charges related to electricity consumption up to 8 kWh per day
- internet access (secure wifi connection)
- the supply of blankets, duvets and pillows, as well as mattress and pillow protectors
- dishwashing and cleaning products
- a baby bed and a baby chair are provided free of charge, on request

The rental price **does not include** :

- bed linen (fitted sheets, duvet covers or sheets, pillow cases)
- bathroom and kitchen linen, which can be rented as an option
- toiletries (soap, shampoo)
- end-of-stay cleaning which can be chosen as an option

Additional charges

These are the charges not included in the rental price :

- Tourist tax: 0.80 € per night and per person
- Electricity : kWh consumed beyond the fixed rate of 8 kWh per day must be paid by the tenant at the end of the stay (price per additional kWh according to the current rate). A record of the electricity consumption will be taken from the meter at the beginning and end of the stay.

Optional services

- | | |
|---|---------------------|
| • end-of-stay cleaning (2 to 4 persons): | 60 € |
| • end-of-stay cleaning (5 to 8 persons): | 80 € |
| (if you do not choose this option we remind you that the cleaning must be carefully done by you before departure) | |
| • bed linen (fitted sheets, duvet covers or sheets, pillow cases) | 14 € per person |
| • bathroom linen (1 large towel, 1 small towel, 1 bath mat) | 10 € per person |
| • kitchen linen (2 tea towels, napkins) | fixed price of 18 € |

Rates 2023

GÎTE

School holyday periods*			
Capacity	Week	Week-end	Mid-week
from 2 to 4 persons	680 €	215 €	390 €
from 5 to 8 persons	880 €	275 €	500 €

Periods outside school holydays			
Capacity	Semaine	Week-end	Mid-week
from 2 to 4 persons	480 €	150 €	270 €
from 5 to 8 persons	680 €	215 €	390 €

* Spring, summer and winter vacations, All Saints' Day and Christmas holidays

The tourist tax is not included in the rates.

Optional services : cleaning at the end of the stay, rental of bed linen, towels and kitchen linen.

Week : from Saturday to Saturday (7 nights)

Week-end : Friday to Sunday (2 nights)

Mid-week : Monday to Friday (4 nights)

GUEST ROOMS

Capacity	Room Larix	Room Fraxinus	Room Abies
1 person	53 €	58 €	63 €
2 persons	73 €	78 €	83 €

Prices are per night, including breakfast.

The tourist tax is not included in the rates.

The Abies room can accommodate up to 4 people: for more than 2 people, the price per additional person is 35 €.

Single night stays are possible with a 10% increase of the price

Optional use of the kitchen: 10 € per day and per room.